



ENVPLAS[®] BOARD

FOR CONSTRUCTION

ZERO WASTE CONSTRUCTION



www.enventerprise.com



About Us

公司简介



ENV Engineering Enterprise Sdn. Bhd. specializes in environmental friendly and recyclable ENVPLAS® Board for construction. With establishments in Singapore, Malaysia, and Sri Lanka, we are involved in manufacturing, quality controlling, recycling and R&D. Our mission is to ensure the highest and finest quality of ENVPLAS® Board for construction is always delivered to you.

ENV ENGINEERING 专注于生产无毒环保，可再循环的ENVPLAS® 建筑模板。我们的公司分别在新加坡，马来西亚，斯里兰卡，业务经营范围主要包括生产，品质检验，回收再循环及产品研发。

我们的使命是确保每一张ENVPLAS® 建筑模板呈现给我们的客户。

WHAT IS

ENVPLAS® BOARD

FOR CONSTRUCTION

ENVPLAS® 建筑模板是什么

ENVPLAS® Board for Construction is an environmental friendly, recyclable product specializes for concrete formwork. Understanding the tough condition in construction industry, each piece of ENVPLAS® Board is carefully designed and manufactured to achieve the durability.

ENVPLAS® 建筑模板是一种无毒环保, 可再循环的专用模板。我们的团队经过反复的实际考察所得到的总结, 精心配制了符合建筑领域严苛要求的建筑模板, 我们致力于确保每一张ENVPLAS® 建筑模板的生产过程都能达到品质的保证



Water Proof
防水性



Weather Resistant
稳定耐候



Environmentally Friendly
环保节能



High Workability
省时高效

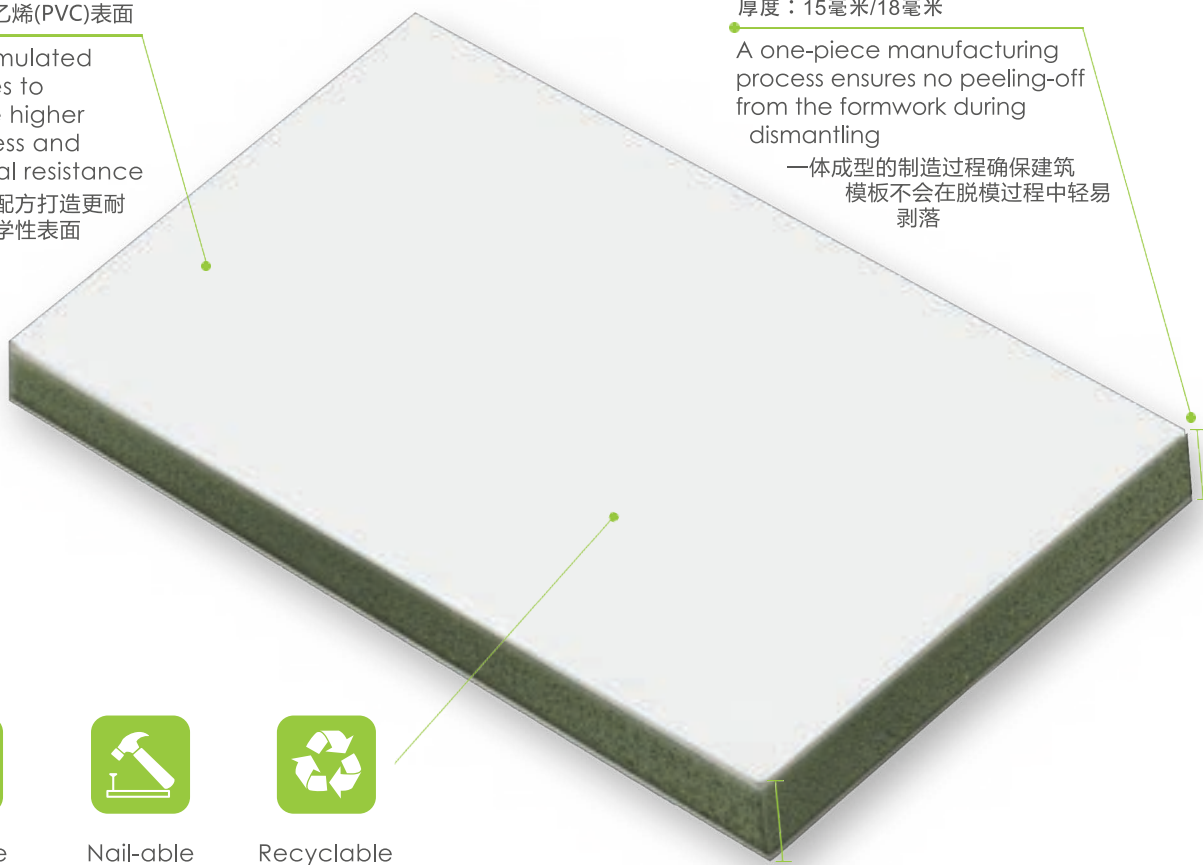
Enhanced PVC Surface
增强聚氯乙烯(PVC)表面

with formulated additives to achieve higher toughness and chemical resistance
根据专业配方打造更耐久及抗化学性表面

Thickness: 15mm / 18mm
厚度: 15毫米/18毫米

A one-piece manufacturing process ensures no peeling-off from the formwork during dismantling

一体成型的制造过程确保建筑模板不会在脱模过程中轻易剥落



Saw-able
可锯



Nail-able
可钉



Recyclable
可再循环

100% Recycled PVC Material
100% PVC回收材质

compressed to achieve a density of 0.70 g/cm³
经加工压缩至密度达0.70 g/cm³

Specifications 规格

Material 材质	Polyvinyl chloride (PVC) 聚氯乙烯(PVC)
Length x Width 长度 x 宽度	2.44m x 1.22m
Thickness 厚度	15mm / 18mm
Density 密度	700 kg/m ³
Fire Rating 防火等级	Grade B2
Recyclable 可回收度	Fully Recyclable 完全回收



WHY

ENVPLAS[®] BOARD

FOR CONSTRUCTION

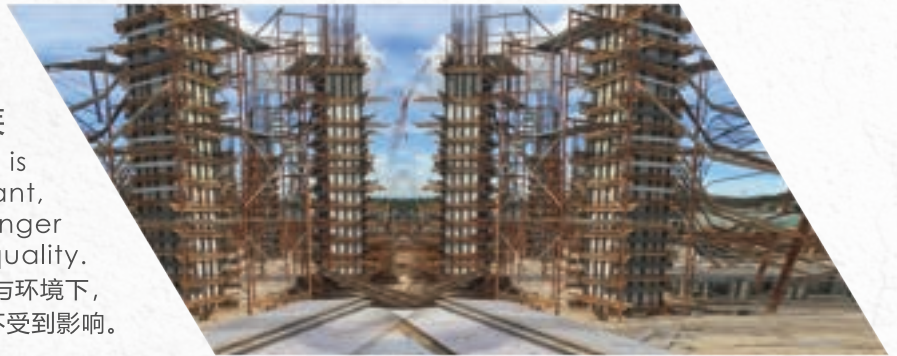


REUSABLE FOR 35 TIMES 高周转次数

ENVPLAS® Board is tested to achieve a minimum of 35 cycles repeated usage of concrete casting. ENVPLAS® 建筑模板经过严峻的测试，并且达到 35 次的混凝土浇筑

100% WATERPROOF 稳定耐候

ENVPLAS® Board is weather-resistant, rain or shine is no longer an issue in the formwork quality. ENVPLAS® 建筑模板在各种的气候与环境下，品质将不受到影响。



100% WASTE BUY-BACK 可回收

All waste is recyclable, regardless of the size and shape of your waste, we buy-back from you! 所有绿业塑料建筑模板经使用后，不论尺寸与状态，绿业都将回收。

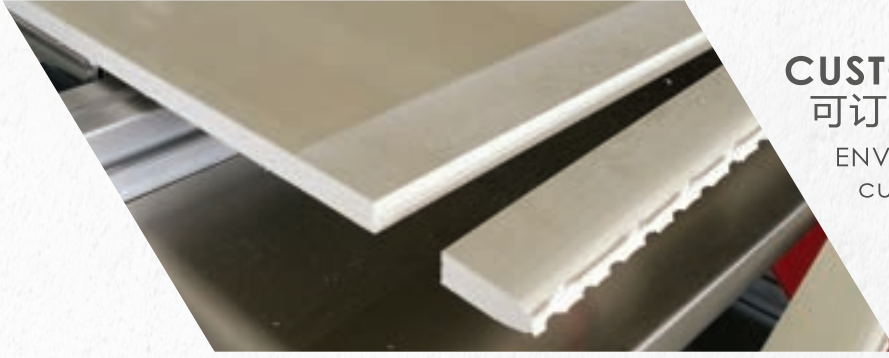
NO MOULD OIL REQUIRED 无需脱模剂

The surface is formulated with additives that makes the board superior in withstanding acidic or alkaline environment. No demoulding oil is required and dismantling of formwork is always easy. 绿业塑料建筑模板表面经研制，在对抗酸性或碱性环境中皆有卓越表现，且脱模简便无需脱模剂。



HIGH WORKABILITY 省时高效

User-friendly, work well with saw, nail, drill, cut, etc. Compatible with other materials such as wood, steel, aluminum, plastics. etc. 相较其他建筑材料如木材、铁铝或塑胶等，绿业塑料建筑模板在安装和裁切上更为简易、方便及快捷。



CUSTOM-MADE 可订尺加工

ENVPLAS® Board is able to cut-to size to suit your requirement.

ENVPLAS® 建筑模板可根据您的要求订制尺寸

ENVPLAS® Board for construction is manufactured under a 'one-piece' process.
No delamination/peel off no matter rain or shine.

ENVPLAS® 建筑模板采用的是“一次成型”的生产工艺，在任何环境的使用过程给予您不脱皮，不分层的品质保证

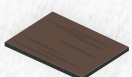


Timber Plywood



ENVPLAS® BOARD

Cost Comparison 成本比较	Timber Plywood 木材胶合板	ENVPLAS® BOARD ENVPLAS® 塑板
Number of Board Used 使用模板数量		
Waste Management 废物管理	Dispose / 报废	100% Recyclable / 100% 回收
Cut-to-size 订尺加工	✗	✓
Fully Water-proof 完全防水	✗	✓
Use of Mould-oil 使用模具油	✓	✗
Easy to Handle 容易处理	✓	✓



Number of Timber Plywood Used



Number of ENVPLAS® Board Used



MALAYSIA, JOHOR
Kim Lun Sdn Bhd -
Sunway Grid, Sunway Iskandar



MALAYSIA, JOHOR
Tay Hup Brothers Construction-
Senibong Cove



MALAYSIA, JOHOR
Inta Bina Group -
UEM Bukit Indah



MALAYSIA, JOHOR
Greenland Danga Bay -
Jade Palace



SINGAPORE
Bukit Timah First Canal Div



绿业工程企业有限公司
ENV Engineering Enterprise Pte Ltd
(201618531R)

Singapore Branch

20, Maxwell Road
#09-17, Maxwell House
Singapore 069113

绿业工程企业(马来西亚)有限公司
ENV Engineering Enterprise Sdn. Bhd.
(1198181-D)

West Malaysia Branch

26, Jalan Bukit 2,
Kawasan Perindustrian MIEL,
Bandar Seri Alam, 81750 Masai,
Johor, Malaysia

East Malaysia Branch

Level 3, Lot 15, Block A1,
Saradise Kuching
93350 Kuching,
Sarawak, Malaysia

For enquiries, please contact 欲知商品详情, 请与我们联系

+6012 761 1751

Malaysia (West)
马来西亚

+6014 580 9159

Malaysia (East)
马来西亚

+65 8181 5281

Singapore
新加坡