



# **ENV MODULAR BRIDGE**

CONNECTING LOCAL COMMUNITIES



9001:2015



14001:2015



45001:2018

[www.enventerprise.com](http://www.enventerprise.com)





## About Us

ENV Engineering Enterprise (ENV) based in Malaysia, prides itself on innovative and sustainable solutions made for the community. From reshaping the construction and furniture industries by offering recyclable boards to reinventing modular systems, we continuously strive to push boundaries in our quest for inventive solutions.

We supply modular systems, including one of our core product, the ENV Modular Bridge. Being the first local manufacturer of the modular bridge in Malaysia, we are dedicated to offering quality bridging solutions that enables convenient connectivity and safe infrastructure for communities. Our company is committed to fostering reliable collaborations and providing professional technical support to valued clients.



**UTM**  
UNIVERSITI TEKNOLOGI MALAYSIA



## Our Direction

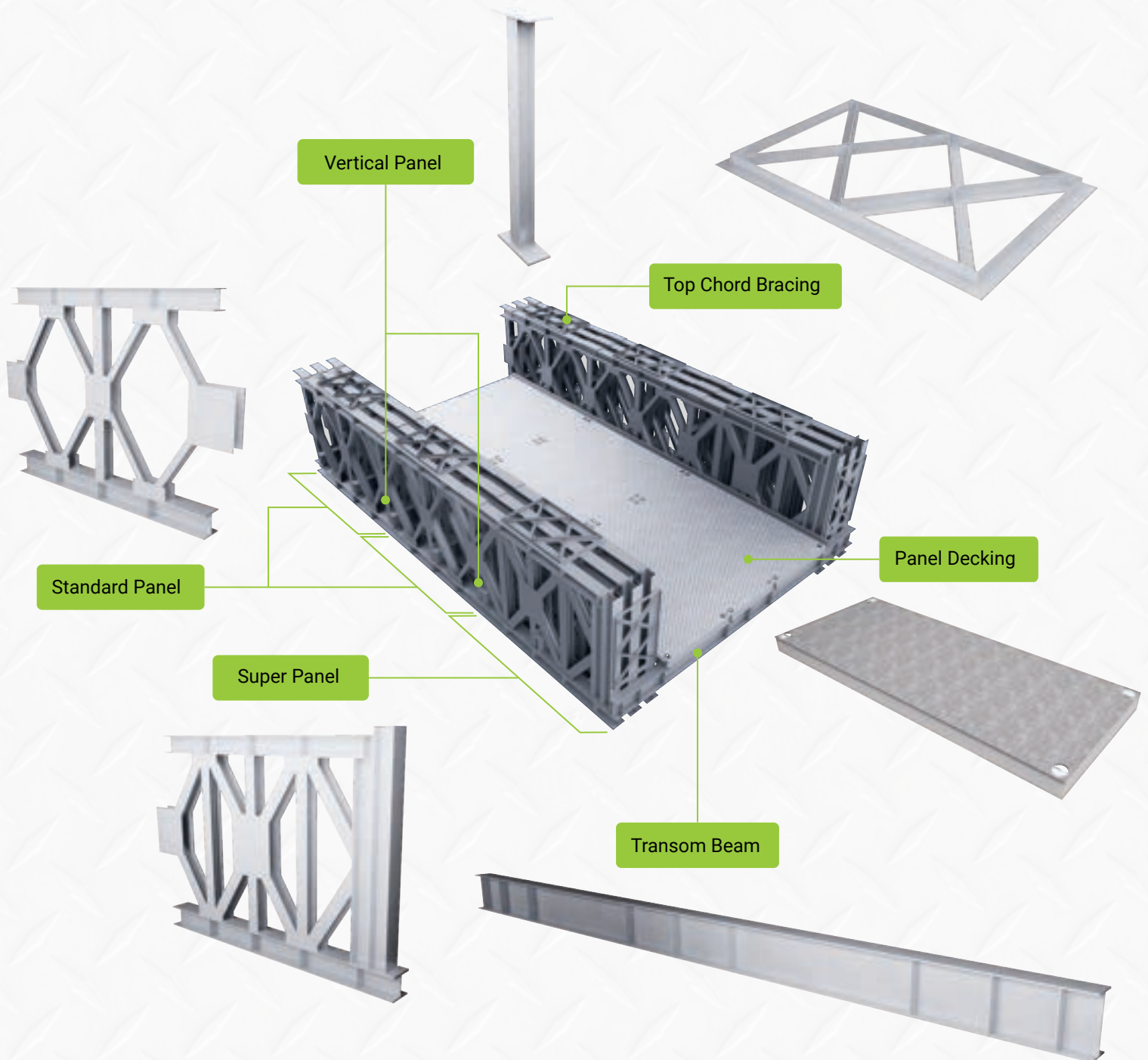
With our product values and comprehensive services, we aim to help connect rural areas where accessibility is limited for the local community, as well as enhance transportation infrastructure in remote regions.

We aspire to be the leading local supplier and manufacturer of the modular bridge in Malaysia and Southeast Asia, contributing to national development.



# ENV MODULAR BRIDGE

The ENV Modular Bridge is a steel bridge designed to cater for easy installation, minimal maintenance and high reliability. This unique design that has been verified through extensive engineering studies, utilises hot-dipped galvanised components and high tensile bolts and nuts, assuring its technical abilities. This system can construct a bridge that spans up to 60 metres, in modular increments of 3 metres. With modular 3m-per-span configurations, it can handle immensely heavy loads, that comply with British standards.





# Product Categories

Product Series	Design Standard	Design Traffic Loading	Bridge Length	
			Single Width 3.7m	Extra Width 4.2m
MB - 100	AASHTO	HS20	30m – 60m	–
MB - 200	BS5400	HA+20HB	30m – 60m	30m – 60m

# Product Specifications



## Design Phase

Design standard complies with BS5400:2006.

## Material Acquisition

Material comply to EN10025-2 Grades: S450, S355 and S275.

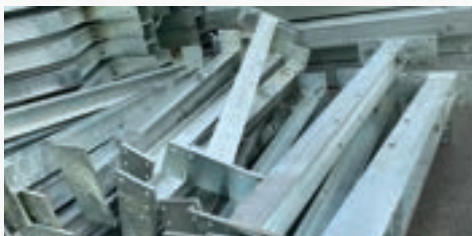


## Connection Bolts & Nuts

High tensile bolts and nuts with hot-dipped galvanised protection.

## Fabrication Process

Manufacturing process complies with ISO.



## Corrosion Protection

Hot-dipped galvanised 85 micron complies with BN ISO1461:2009.

## Logistic Operation

Systematic components storage, packing and transportation.



## Our Strengths

### Local Design

#### Professional Technical Support

Reliable technical assistance will be provided in fulfilling requirements from the local authorities.

### Local Manufacture

#### Cost-effective Logistics

Faster delivery times and lower shipping cost.

### Local Material

#### Attainable Spare Parts

Our materials are procured locally and accompanied by readily available spare parts.



## Product Values



Easy Installation



Engineering Tested



Minimal Maintenance



Highly Portable

## Comprehensive Services



Product Consultation



Structural Report



PE Endorsement



Technical Support





**ENV Engineering Enterprise Sdn. Bhd.**  
(1198181-D)

**West Malaysia Branch**

No. 26, Jalan Bukit 2,  
Kawasan Perindustrial MIEL,  
Bandar Seri Alam,  
81750 Masai, Johor.

**East Malaysia Branch**

No. 1861, Lorong Stutong 20B,  
Tabuan Jaya Baru 2,  
93350 Kuching, Sarawak.

**+6016 762 1761**  
sales@enventerprise.com